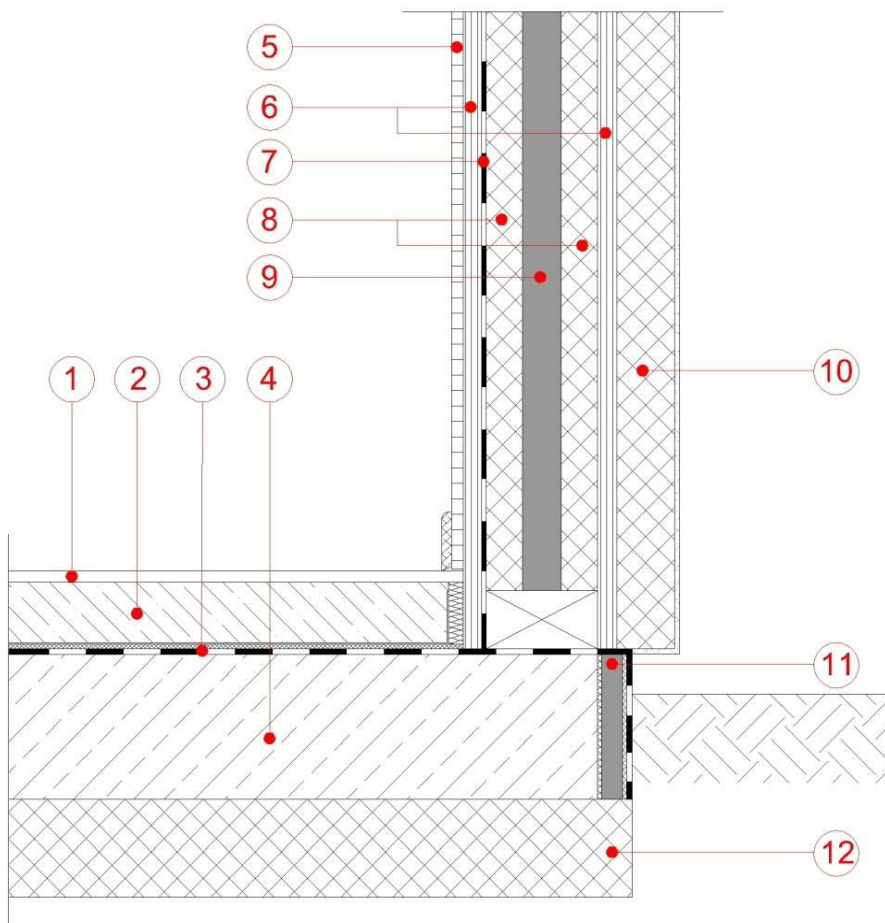


Insulation With Timber Frame with Vacupor® and Vacuspeed®



- | | |
|-----------------------|--|
| 1 Floor Covering | 8 Insulation |
| 2 Screed | Vacupor® RP-B2-S
Vacupor® XPS-B2-S |
| 3 Sealing Layer | 9 Vacupor® PS-B2-S
Vacupor® TS-B2-S
Vacupor® NT-B2-S
VACUSPEED® |
| 4 Concrete or Similar | 10 Insulated Render System |
| 5 Plaster Board | 11 Edge Insulation |
| 6 OSB or Chipboard | 12 Base Insulation |
| 7 Vapour Barrier | |



The sketches above and their related descriptions are typical representations only. All designs must be carried out for a specific project and should be cleared by the final client or their representatives with either Building Control or the relevant authorities.