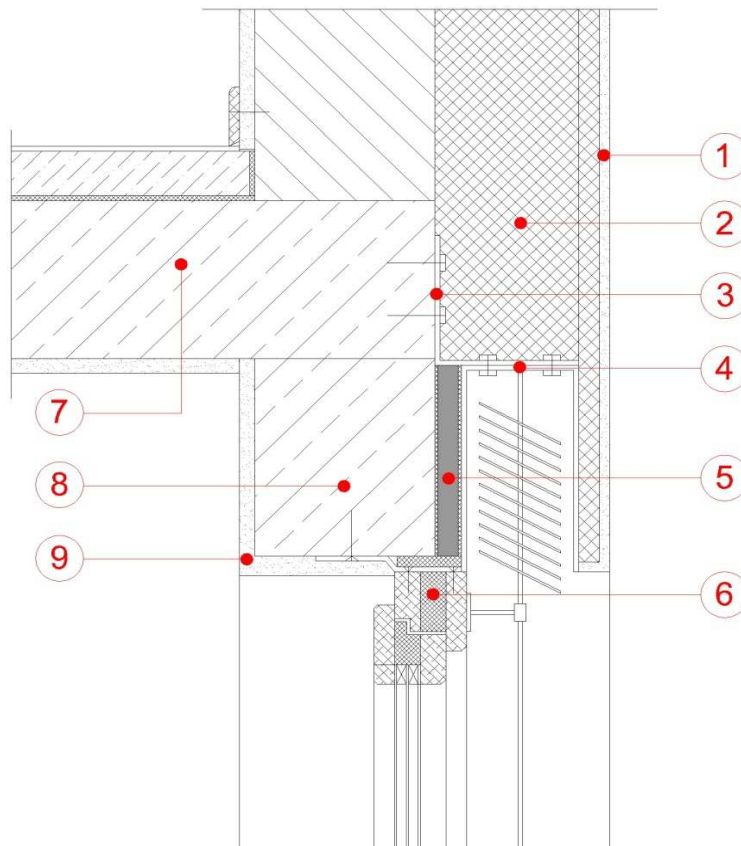


Wall Insulation for Venetian Blind Boxes with Vacupor® and Vacuspeed®



- | | |
|---|-----------------------|
| ① Render System | ⑥ Window |
| ② Insulation | ⑦ Concrete or Similar |
| ③ Mounting Bracket | ⑧ Concrete |
| ④ Venetian Blind Box | ⑨ Plaster |
| Vacupor® XPS-B2-S
Vacupor® PS-B2-S
Vacupor® TS-B2-S
Vacupor® NT-B2-S
(+ Protective Layer)
VACUSPEED®
(+ Protective Layer) | |



The sketches above and their related descriptions are typical representations only. All designs must be carried out for a specific project and should be cleared by the final client or their representatives with either Building Control or the relevant authorities.