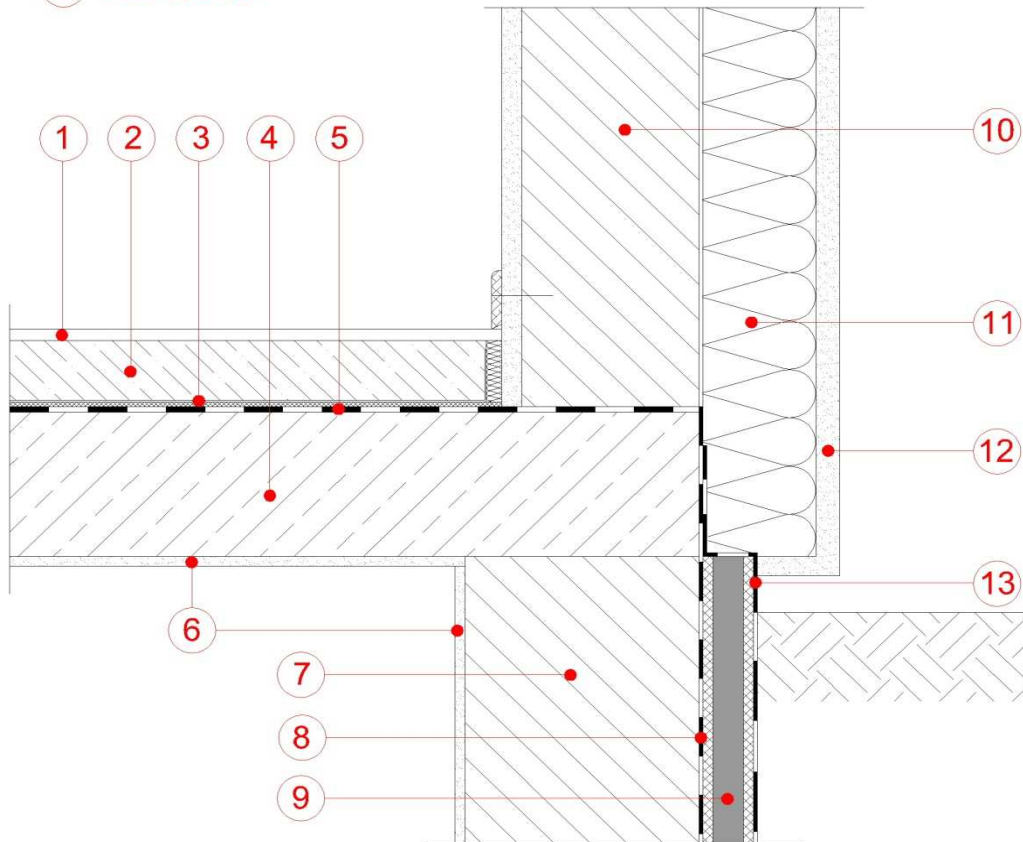




Potential Thermal Bridging Insulation with Vacupor® and Vacuspeed®

- | | |
|--------------------------|----------------------|
| 1 Floor Covering | Vacupor® XPS-B2-S |
| 2 Screed | Vacupor® PS-B2-S |
| 3 Sound Absorption Layer | Vacupor® TS-B2-S |
| 4 Concrete or Similar | Vacupor® NT-B2-S |
| 5 Sealing Layer | (+ Protective Layer) |
| 6 Plaster | VACUSPEED® |
| 7 Cellar Blockwork | (+ Protective Layer) |
| 8 Sealing Layer | 9 |
| | 10 Blockwork |
| | 11 Insulation |
| | 12 Render |
| | 13 Sealing Layer |



The sketches above and their related descriptions are typical representations only. All designs must be carried out for a specific project and should be cleared by the final client or their representatives with either Building Control or the relevant authorities.