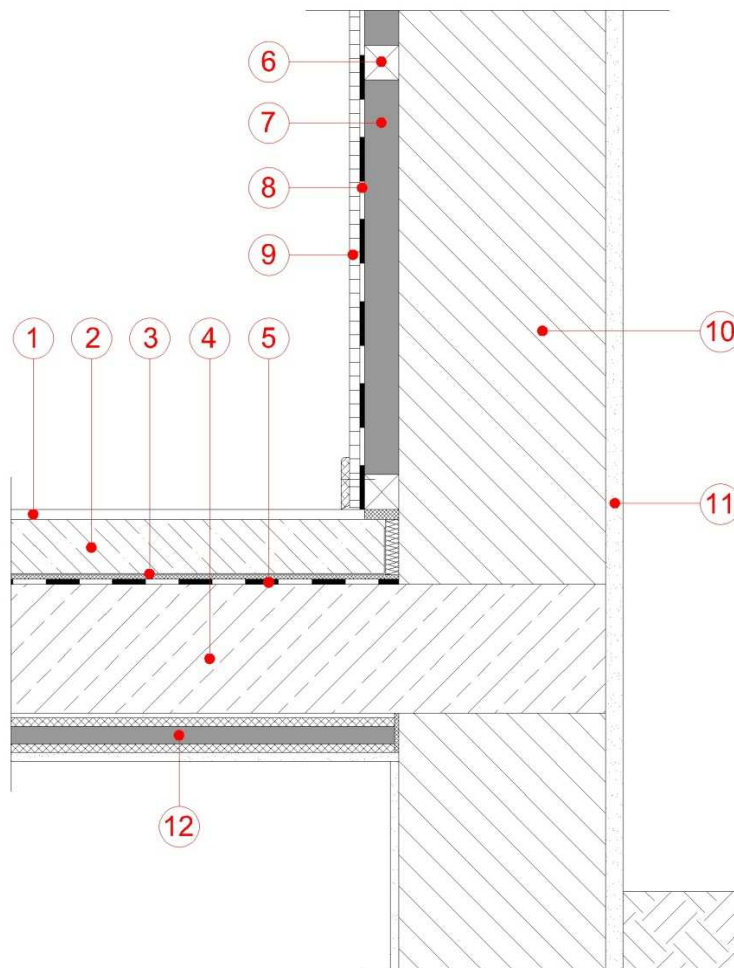




Inside Insulation on Outer Wall with Vacupor® and Vacuspeed®

- | | |
|-----------------------|--|
| 1 Floor Covering | Vacupor® XPS-B2-S |
| 2 Screed | Vacupor® PS-B2-S |
| 3 Sound Absorption | Vacupor® TS-B2-S |
| 4 Concrete or Similar | Vacupor® NT-B2-S
(+ Protective Layer) |
| 5 Sealing Layer | VACUSPEED®
(+ Protective Layer) |
| 6 Timber Battening | 7 |
| | 8 Vapour Barrier |
| | 9 Plaster Board |
| | 10 Block Work |
| | 11 Render |
| | 12 Cellar Board |



The sketches above and their related descriptions are typical representations only. All designs must be carried out for a specific project and should be cleared by the final client or their representatives with either Building Control or the relevant authorities.