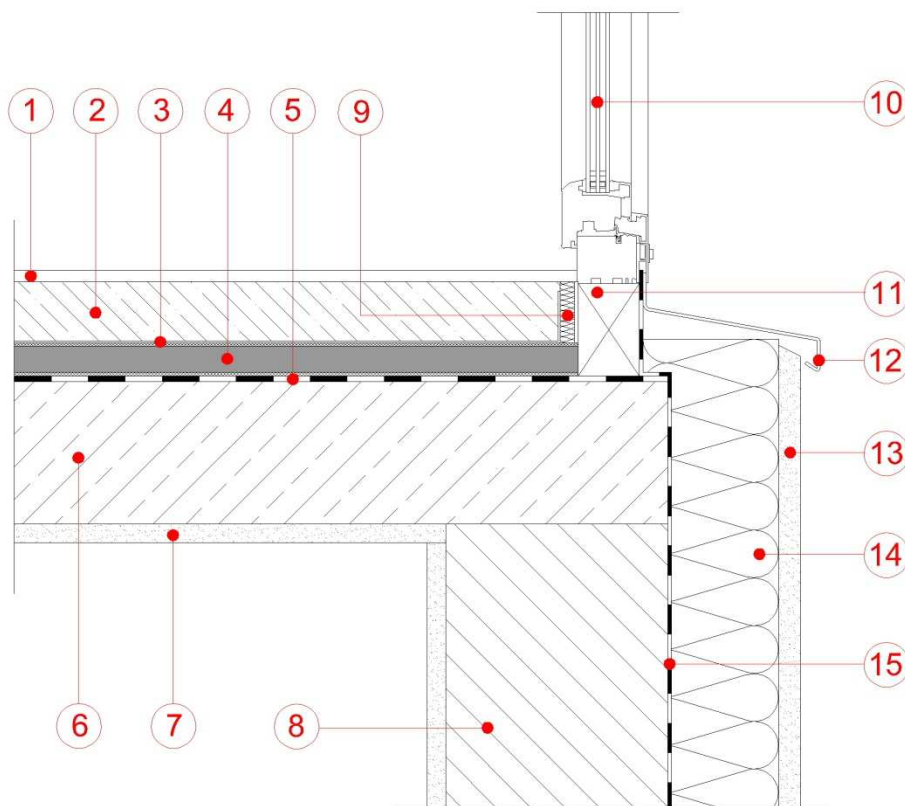




**Insulation to Typical Basement with Vacupor® and Vacuspeed®**

- |   |                     |
|---|---------------------|
| 1 Floor Covering  | 7 Plaster Board     |
| 2 Screed  | 8 Blockwork         |
| 3 Separation Layer  | 9 Edge Insulation   |
| 4 Vacupor® RP-B2-S<br>Vacupor® XPS-B2-S<br>Vacupor® PS-B2-S<br>Vacupor® TS-B2-S<br>Vacupor® NT-B2-S<br>(+ Protective Layer)<br>VACUSPEED®<br>(+ Protective Layer) | 10 Window           |
| 5 Vapour Barrier  | 11 Supporting Frame |
| 6 Concrete  | 12 Window Cill      |
|   | 13 Render System    |
|   | 14 Insulation       |
|   | 15 Vapour Barrier   |



The sketches above and their related descriptions are typical representations only. All designs must be carried out for a specific project and should be cleared by the final client or their representatives with either Building Control or the relevant authorities.