

Reference	FM 4.69 Rev 4
Release Date	September 2020



## Fire Protection Systems Information

# A60 Steel Bulkhead

## Fire towards INSULATED side

### Profile Wrap System

### Accompanies Method Statement FM-MS 01 PW

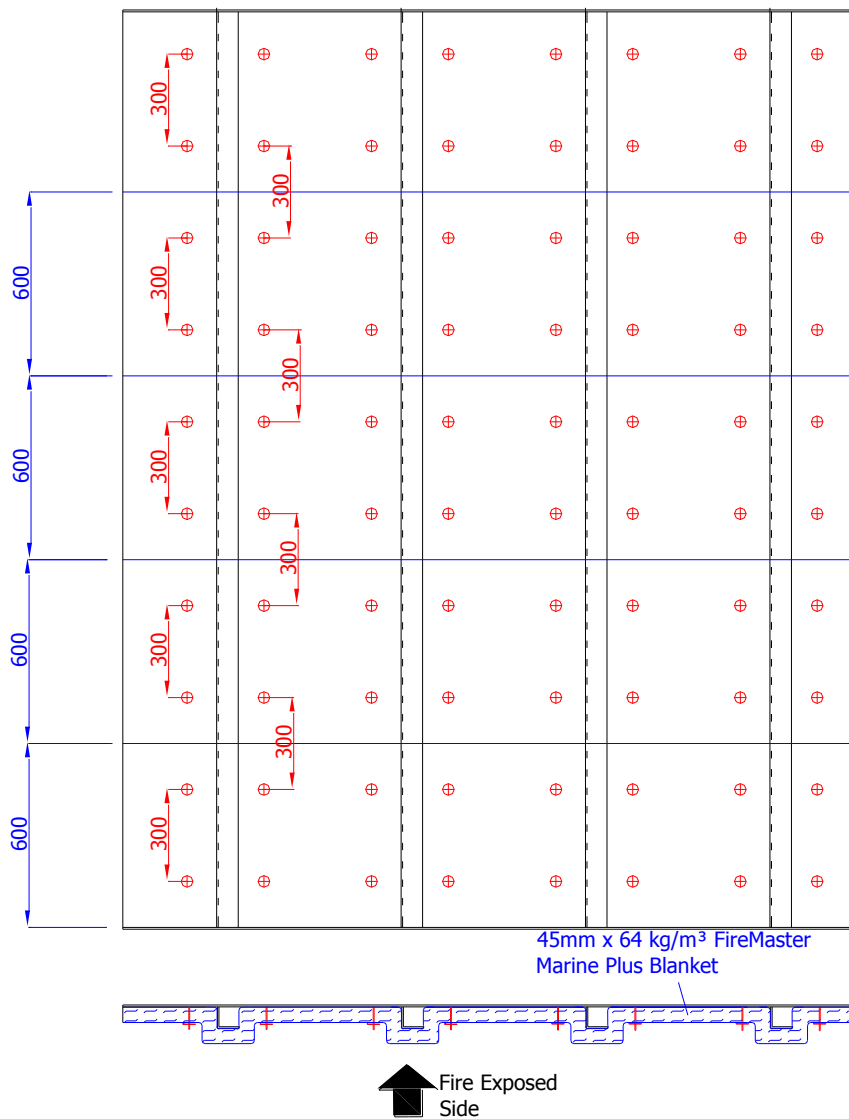
<b>Product</b>	FireMaster Marine Plus Blanket
<b>Application Requirements</b>	45mm of 64 kg/m <sup>3</sup> Blanket applied in one layer over bulkhead plate and stiffeners. Thicker and denser insulation may also be installed to meet thermal requirements – refer to MED B Certification for details. Refer to the included drawings for alternative insulation arrangements also approved in the MED B Certificate.
<b>Anchoring</b>	CD welded pins 3mm diameter 12 to 25mm longer than blanket thickness. Friction fit retaining washers
<b>Weight</b>	2.88 kg/m <sup>2</sup> between and over stiffeners
<b>System Drawing Reference</b>	FM CAD13-4.69
<b>System Features</b>	Single layer installation No packing of stiffener web No anchors required on stiffeners No chicken mesh required
<b>Certification</b>	EU Marine Equipment Directive (DNV) DNV US Coastguard (MRA+) LR ABS



Reference	FM 4.69 Rev 4
Date of Issue	September 2020

## Drawing FM CAD 13 4.69 A60 Steel Bulkhead Fire Insulated Side only (restricted application)

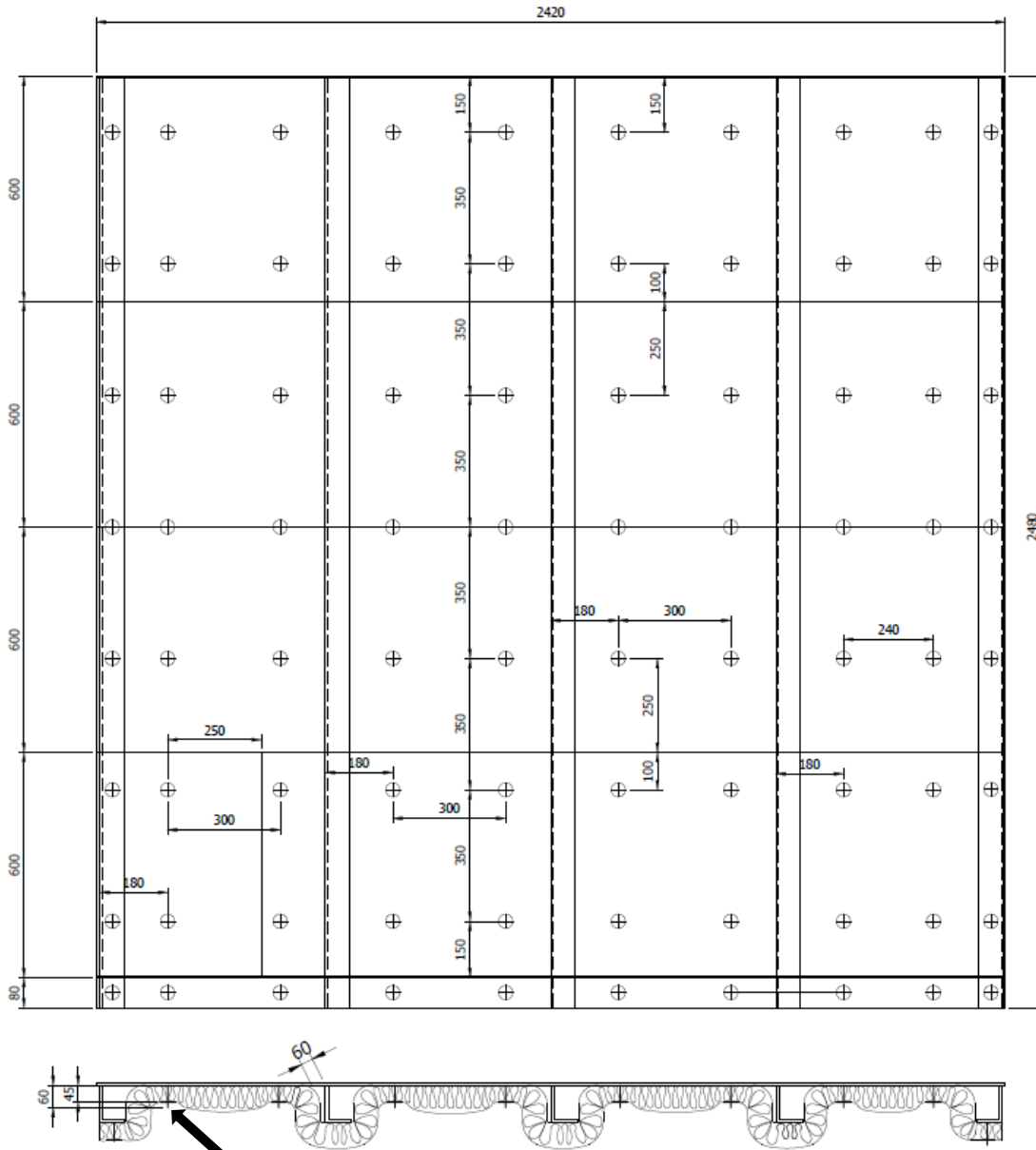
45mm x 64 kg/m<sup>3</sup> applied in one single layer on stiffened side of bulkhead plate. Stiffeners not packed with blanket.



Reference	FM 4.69 Rev 4
Date of Issue	September 2020

Fire Protection Systems Information

## EXAMPLE INSTALLATION OF THICKER INSULATION FOR THERMAL REQUIREMENTS



Blanket may be compressed from 65mm up to 45mm (i.e. 30%) thickness. Pin length to be from 50mm to 80mm typically.



Reference	FM 4.69 Rev 4
Date of Issue	September 2020

Fire Protection Systems Information

## ALTERNATIVE INSULATION ARRANGEMENTS

Separate installation around stiffeners

