

Reference	FM 4.110 Rev 6
Date	May 2018

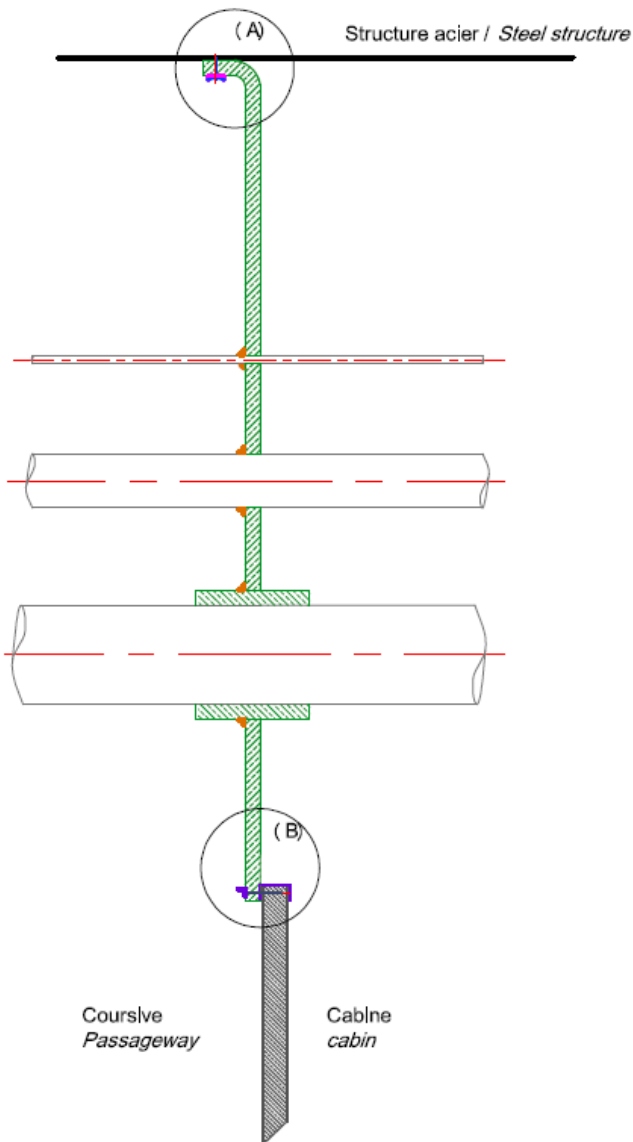


Fire Protection Systems Information

B15 Cabin Wall Extension / Draught Stopping

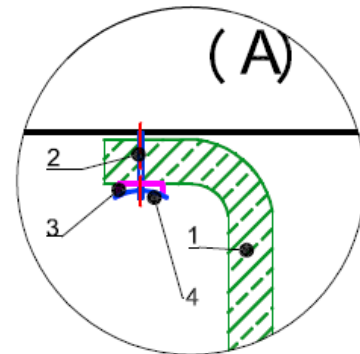
Product	FireMaster Marine Plus Blanket
Application Requirements	<p>30mm x 80 kg/m³ FireMaster Marine Plus Blanket faced on both sides with aluminium foil fixed to the deck above and the top of a B15 rated fire division</p> <p>25mm of Blanket may be substituted for the 30mm when the application is for a draught stop only. When used as a draught stop not all the requirements of the B15 installation methods apply. See drawings for details.</p>
Anchoring	CD welded steel pins 3mm diameter and friction fit washers. Pigtail Type Spiral Fixings – comprising 1.5mm dia. steel with approx. outer dia. of 18-20mm. 80mm long with 6 to 7 twists. See drawings for details.
Weight	2.4 kg/m ²
System Drawing Reference	See Drawings enclosed on this system data sheet.
System Features	<ul style="list-style-type: none"> • Low weight of 2.4kg/m² is much lighter than alternative systems. • Ease of installation : no steel bars required to fix the curtain elements together, self-adhesive alu-tape is not required • Flexible system which is used as a curtain when cable tray and ventilation duct or water pipes are already installed. • Installation of virtually all of the system is possible from the non-cabin side of the division where there is better access for installers to work
Certification	DNV & EU MED

General Arrangement



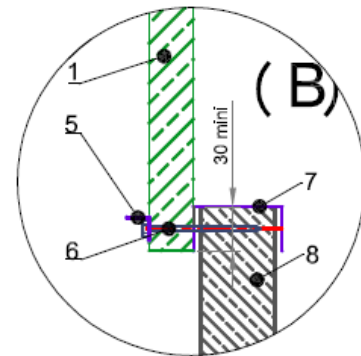
Reference	FM 4.110 Rev 6
Date of Issue	May 2018

Fixation sur structure



- 1 Ecran FM B15 / B15 screen FMMP
- 2 Alguille $\varnothing 3\text{mm}$ / Pin $\varnothing 3\text{mm}$
- 3 U 30x8x1.5mm / U steel section
- 4 Clps

Fixation sur cloison

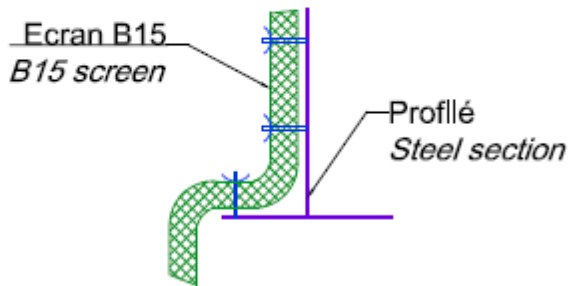


- 5 Cornière 15x15x2mm
- 6 Vls autotaraudeuse / Self tapping screw
- 7 Profilé P5J / P5J profil section
- 8 Panneau cloison / panel

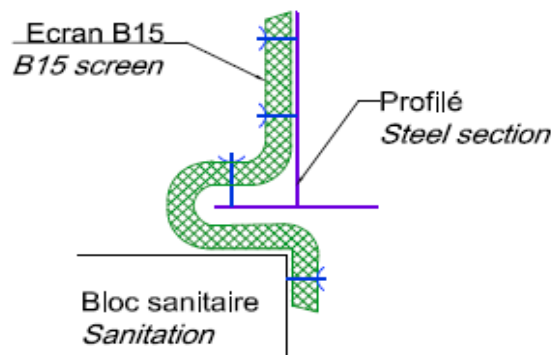
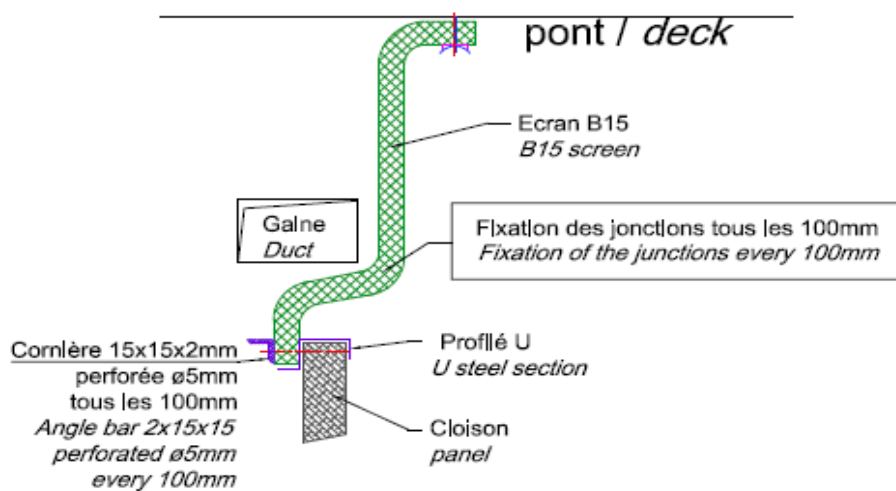
Reference	FM 4.110 Rev 6
Date of Issue	May 2018

Fire Protection Systems Information

Avant pose cabine Before putting in cabin



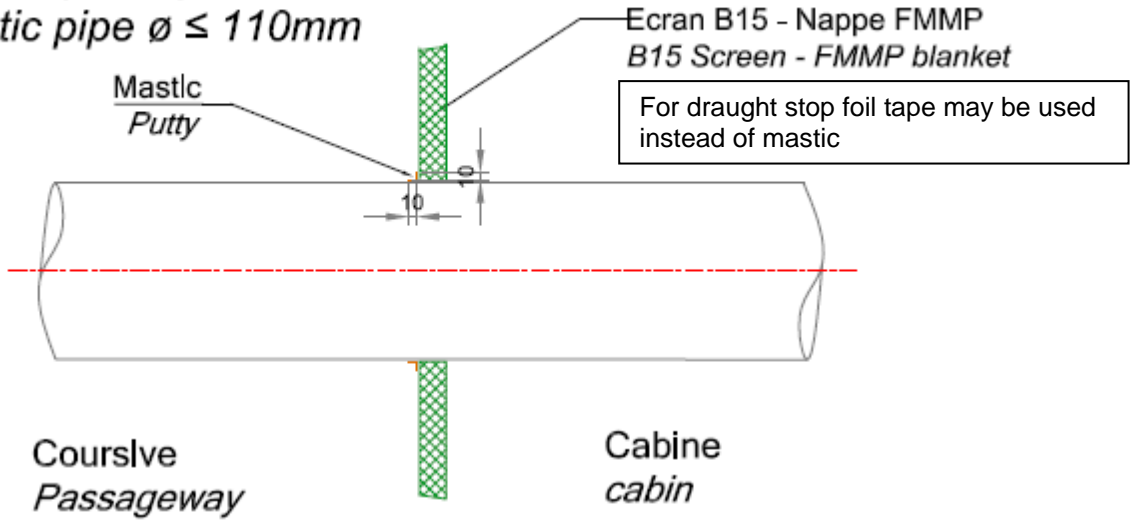
After installation in cabin



Reference	FM 4.110 Rev 6
Date of Issue	May 2018

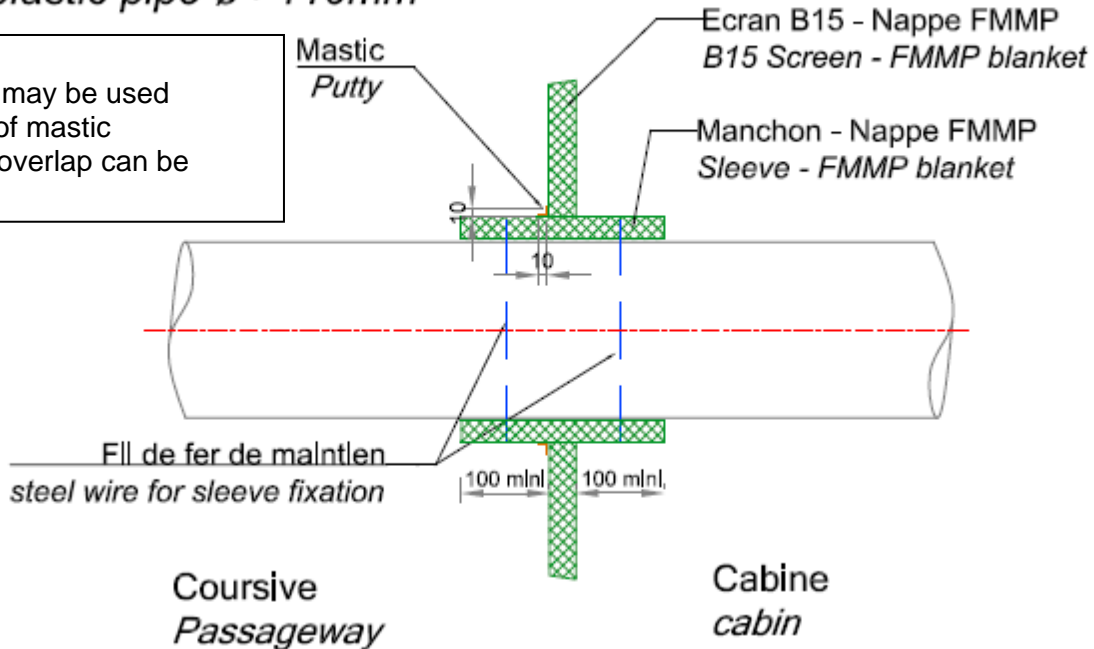
Penetration Details

Pour tuyau plastique $\varnothing \leq 110\text{mm}$
 For plastic pipe $\varnothing \leq 110\text{mm}$



Pour tuyau plastique $\varnothing > 110\text{mm}$
 For plastic pipe $\varnothing > 110\text{mm}$

For draught stop:
 1. foil tape may be used instead of mastic
 2. 100mm overlap can be omitted

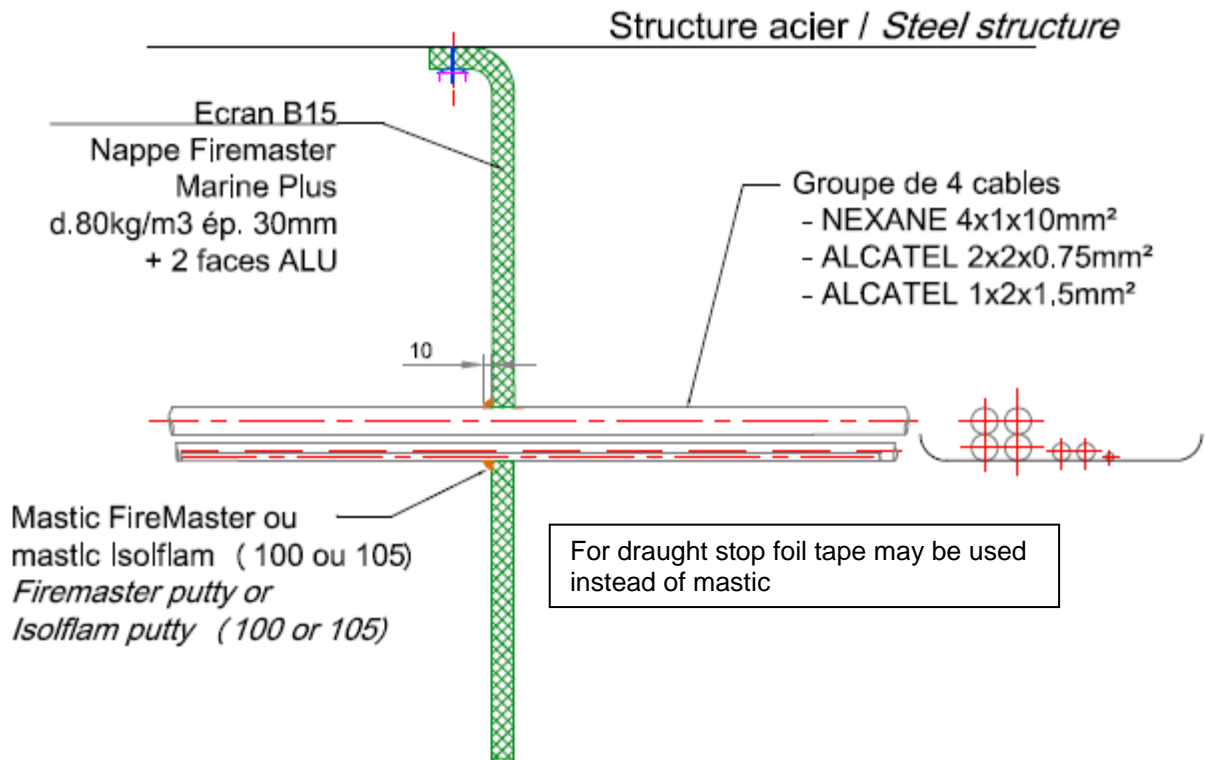


Reference	FM 4.110 Rev 6
Date of Issue	May 2018

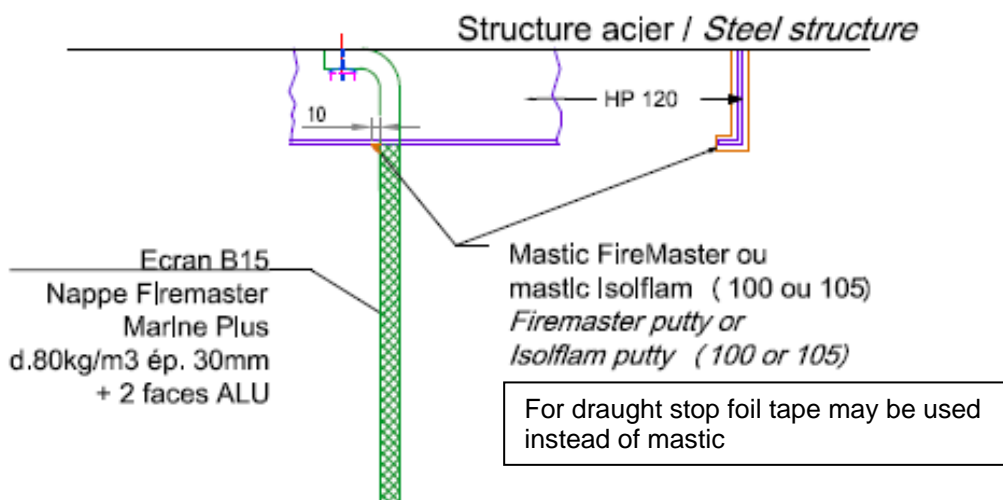
Fire Protection Systems Information

Penetration Details

Cable Tray and Stiffener Angles



Détail de passage
du raidisseur HP120

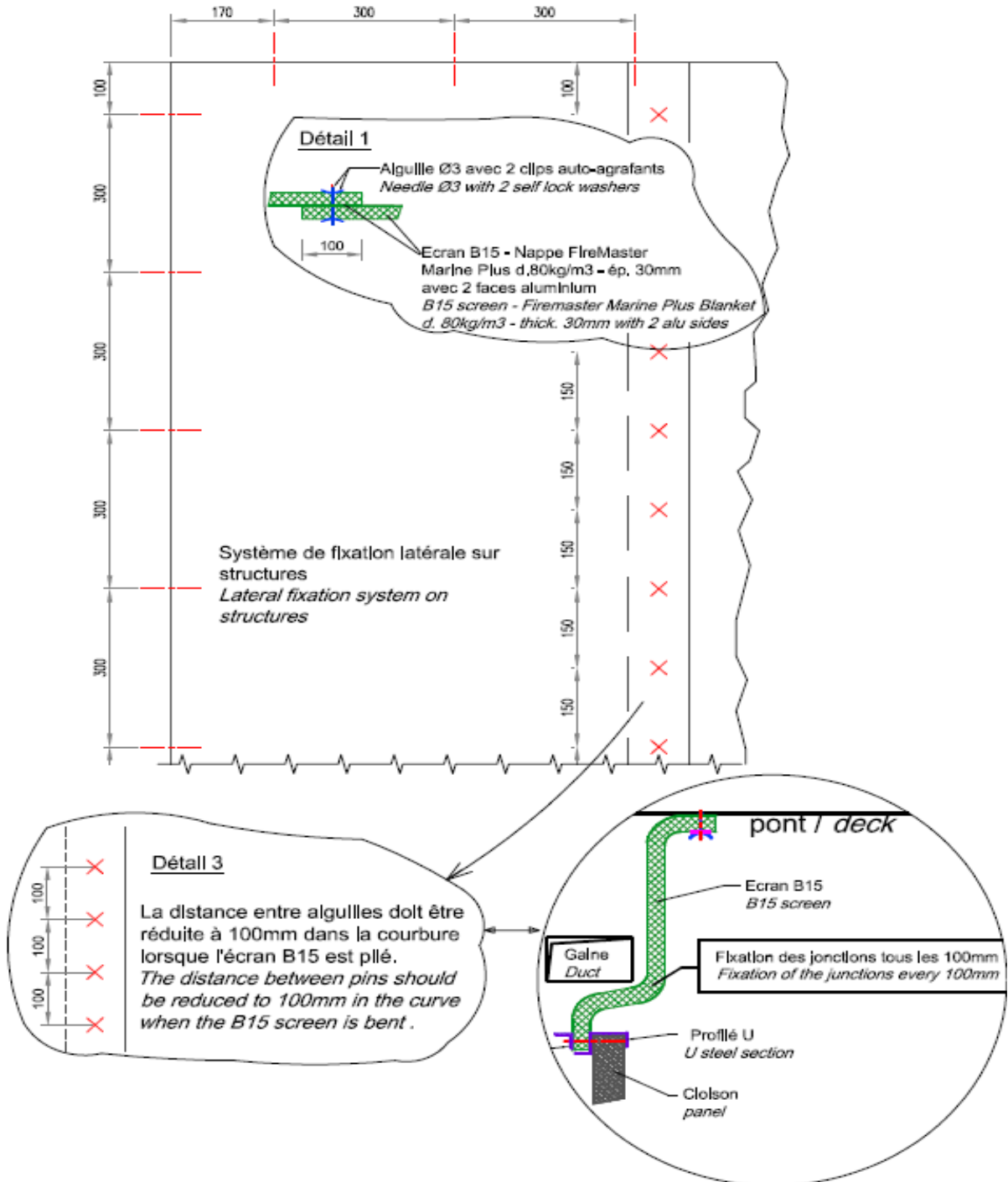


Reference	FM 4.110 Rev 6
Date of Issue	May 2018

Fire Protection Systems Information

Anchor Fixing

Jonction entre 2 nappes FMMP par chevauchement / Junction between 2 FMMP



Blankets by overlap

Reference	FM 4.110 Rev 6
Date of Issue	May 2018

Fire Protection Systems Information

Jonction entre 2 nappes FMMP par recouvrement / Junction between 2 FMMP Blankets with cover strip

